

FAMILY CONNECTIONS

Village



JANUARY 2026

Windsor Elms Village Newsletter

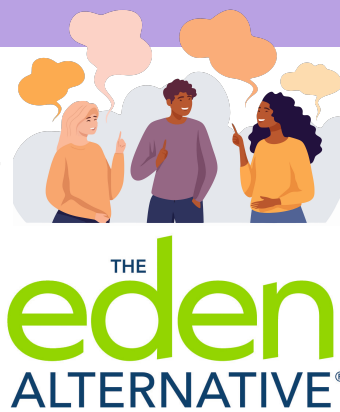
**HAPPY
NEW
YEAR**

Message from CEO, Candace Lyon

Happy New Year! January is a time of reflection and renewal, and it provides an opportunity to look ahead with purpose and optimism. The winter months can bring unique challenges but our dedicated team continues to work diligently to ensure residents feel comfortable, supported, and engaged each day. We look forward to the year ahead and all that it will bring.

Eden Warmth Surveys

Thank you to everyone who participated in our annual Eden Warmth Survey! We are thrilled to see an increase in responses this year and truly value the feedback shared by families. Your input plays an important role in guiding our Eden journey and helps us make our home even warmer, more welcoming, and more connected for residents and care partners. The survey is now closing, and results will be shared in February via email and posted within our home so everyone can see the collective feedback. Thank you for taking the time to share your thoughts — your voice truly makes a difference!



Upcoming Live Music & Events

JOIN US

January 10 @ 1:30

Music in with John&Friends

January 13 @ 6:00

Live music with Steve

January 15 @ 6:00

Live music with Ben Weir

January 20 @ 6:00

Live music with Patrick

January 24 @ 1:30

Live music in Meadowview with John, Stan, and Friends

January 27 @ 7:00

Live music with the Fret Notes

January 28 @ 2:00

Live music with Rule62

January 29 @ 2:00

Live Music with Rodney Hanks



Resident & Family Council

Meadowview – January 12 @ 11:00

Fundyview – January 19 @ 11:00

Osprey – January 26 @ 10:30

Circle of Support – Family & Friends of WEV Residents

We invite you to join our Circle of Support for Family and Friends of WEV Residents. Having a loved one in long-term care can bring a wide range of emotions, questions, and moments of both joy and challenge. It's a unique experience and one that can feel easier when shared. This group offers an opportunity to **connect with others who share the journey of supporting someone at Windsor Elms.**

This is a space to:

- Connect with others who may relate to your experience
- Share concerns, ideas, and reflections
- Explore topics you'd like to learn more about and learn about available resources

 **Tuesday, January 27, 2026**

 **Boardroom** (next to reception desk)

 **3:30pm to 4:30pm**

For more information, please contact:

Malorie Beckett

902-790-0311 or socialwork@winelms.ca



Circle of Support

for Families & Friends of Residents

Windsor Elms Village

FAMILY CONNECTIONS


Village

JANUARY
2026



Windsor Elms Village
Newsletter

Winter Weather



During winter weather, our team works diligently to keep all entrances and walkways clear, with full snow removal completed once a storm has passed. During active snowfall, we kindly encourage everyone to use the main entrance, as it is prioritized for clearing and is the safest option. At this time of year, we are also noticing more salt and water being tracked into our home. To help keep our floors safe and clean for everyone, we kindly ask visitors to change footwear or use the blue footwear covers available at all entrances. Thank you for your patience, understanding, and for helping us keep Windsor Elms Village safe, clean, and welcoming for all.



Fire Safety Reminder

The Fire Marshal recently completed their inspection of our home. One topic of concern was the use of uncertified electronics (phone/tablet chargers, clocks, etc). To help keep everyone safe, please ensure that any electronics brought into the home are certified with one of the following logos: CSA, cUL, or cETL. They look like this:



If you have any questions or concerns, please ask to connect with someone in our Maintenance Department. Thank you for helping us keep Windsor Elms Village safe for all residents, staff care partners and visitors.

Resource Spotlight

Resource Spotlight: Alzheimer Society of Nova Scotia – Dementia Helpline January is Alzheimer's Awareness Month, a time to recognize the impact of dementia and the importance of support for individuals, families, and caregivers.

If memory loss, confusion, or other dementia-related changes are affecting you or someone you care about, the Alzheimer Society of Nova Scotia's Dementia Helpline offers free, confidential support. Trained staff are available to listen, answer questions, and connect callers with helpful information, education, support and community programs.

Helpline Hours:

- Monday–Thursday: 8:30 a.m.–4:30 p.m.
- Friday: 8:30 a.m.–1:00 p.m.
- Closed weekends

Dementia Helpline (NS): 1-800-611-6345

Email: alzheimer@asns.ca



*Société
Alzheimer
Society*
NOVA SCOTIA

Our WEV Social Worker is here for
you too!

Malorie Beckett

Call/Text: 902-790-0311

Email: socialwork@winelms.ca

To connect with the Dementia Helpline, call the Alzheimer Society of Nova Scotia and ask to speak with a helpline team member. Voicemail messages left outside operating hours will be returned during business hours. Email inquiries are also welcomed.